

„SCIENCE OF DEPTH,
DEPTH OF SCIENCE”



ROCKSTUDY
LTD.



Science-based solutions for practical problems!



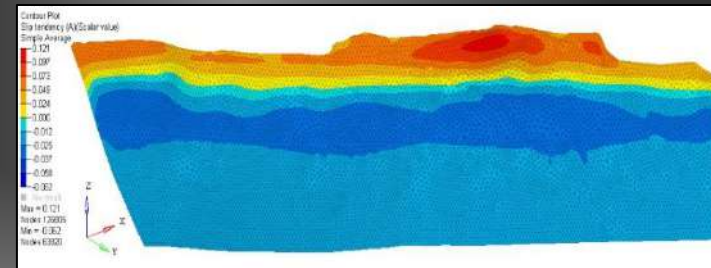
Our Facilities



1. Headquarter – offices
2. A fully equipped rock-mechanical laboratory
3. A special laboratory test site for a R&D project

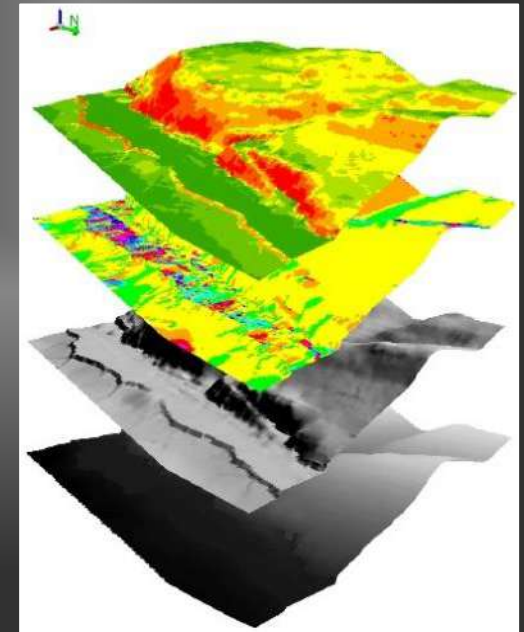
Most important references

- *Rock mechanical and geotechnical investigations of National Radioactive Waste Repository at Bataapati, Hungary*
- *The characterization project preparing the final disposal of Hungarian high level radioactive waste and spent fuels*
- *Geological research project for the new Hungarian nuclear power plant (Paks II)*
- *Geothermal R&D project: contribution to the development of a sustainable reinjection technology of used hot water*
- *Rock mechanical investigations of the UCG-research project in the Eastern-Mecsek Mts*
- *Slope stability analysis at various locations based on our own geological and geotechnical surveys and GIS methods*
- *Participation in the characterization program of the site for underground Einstein-Telescope in Hungary*

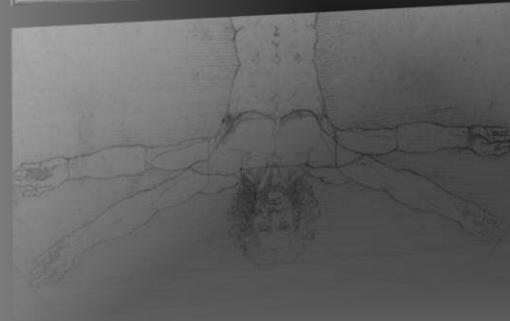
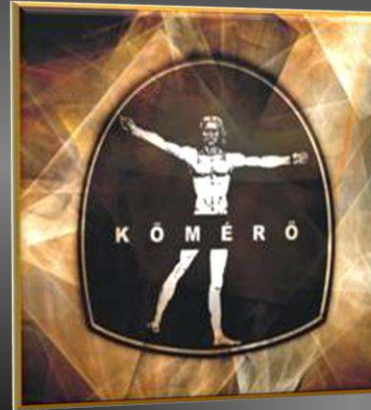
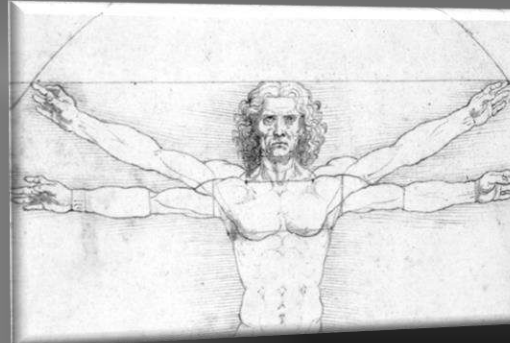
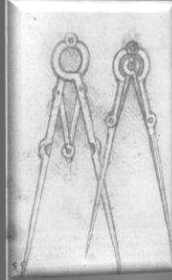


Our service portfolio

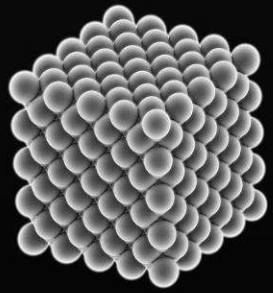
1. Geotechnical assessment
2. Laboratory services
3. GIS database building, data processing and developing
4. Consulting and engineering
5. GIS-based expert systems



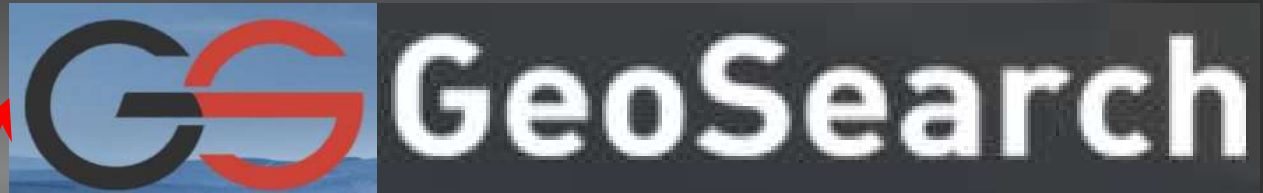
Our Mission



The future of the mankind depends on the more intensive utilization of the Eart's crust. Our mission is to facilitate that, at the most updated technical and scientific level, meeting the Client's requirements .



The only way: cooperation



That is the reason
why we are here...

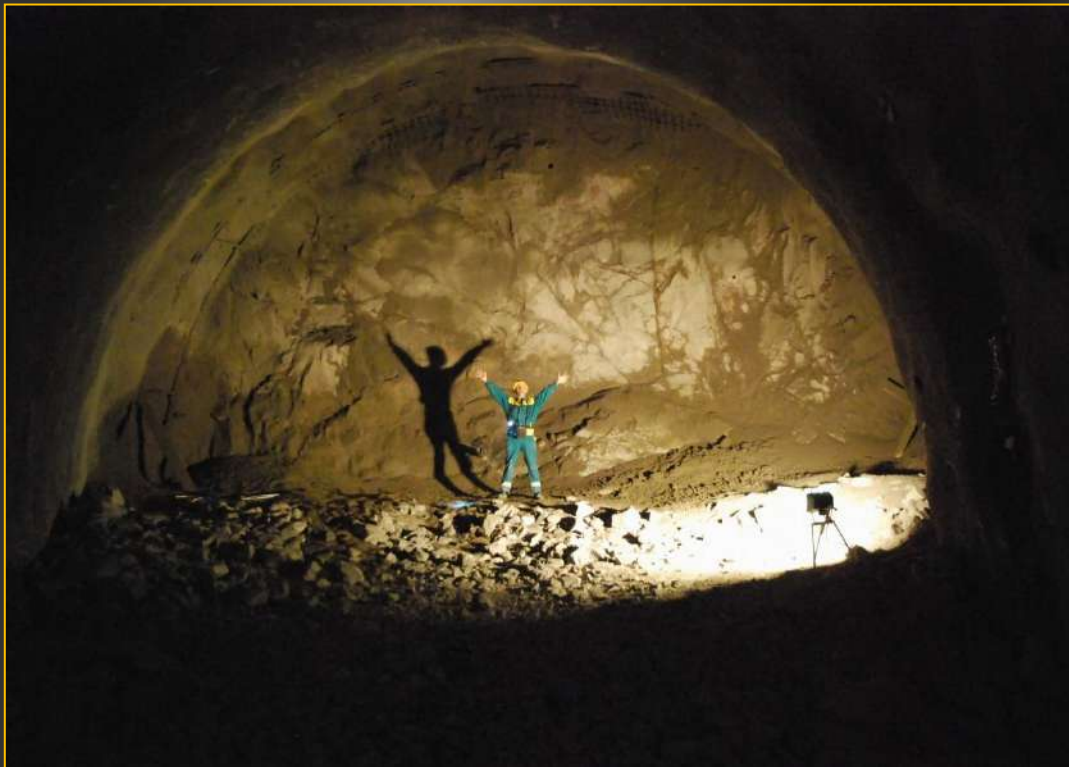
Thank you!

Krisztina Reisz Amigya Mrs. COO

reiszkrisztina@komero.hu

Laszlo Kovacs CEO

kovacslaszlo@komero.hu



ROCKSTUDY LTD.

www.komero.hu